



# VARIANT™ II β-thalassemia Short Program

## Fully Automated Hemoglobin Testing

The VARIANT™ II β-thalassemia Short Program is a fully automated method for β-thalassemia and abnormal hemoglobin testing.

### Efficient

- Performs hemoglobin screening, %HbA<sub>2</sub> quantitation, and %HbF quantitation in a single run
- Sampling from primary whole blood tubes—no sample preparation
- Clear, accurate results in minutes

### Powerful

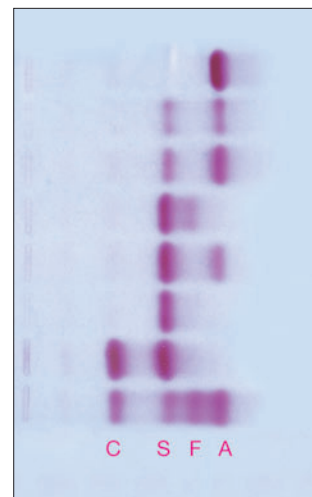
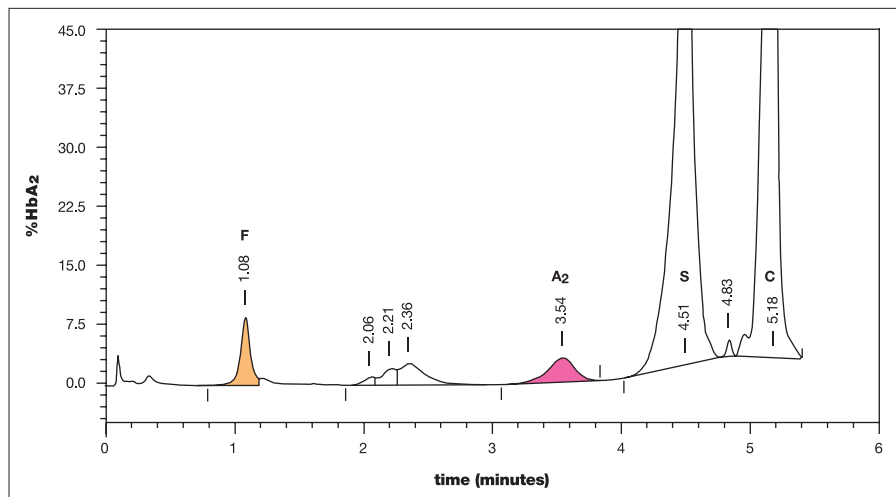
- Simultaneous quantitative results for %HbA<sub>2</sub> and %HbF
- Detection of hemoglobinopathies
- On-board QC program

### Reliable

- Full automation greatly reduces hands-on time and technique-dependent errors
- Bar code reading of sample tubes eliminates the possibility of sample misidentification
- Results and chromatograms are stored electronically for improved interpretation
- Results are objective and operator independent
- Proven HPLC precision

**BIO-RAD**

## VARIANT™ II β-thalassemia Short Program



A typical β-thalassemia Short Program chromatogram of a patient of HbS/C phenotype. Integration of the chromatogram by the VARIANT™ II yields objective and precise results when compared to traditional methods.

The β-thalassemia program combines three laboratory methods into a single, fully automated assay. Unlike electrophoretic and column methods, the VARIANT™ II provides objective and precise results.

### Ordering Information

Catalog No.	Description	
270-2103	VARIANT™ II β-thalassemia Short Program.....	250 tests
270-2154	VARIANT™ II β-thalassemia Short Program.....	500 tests
553	Lyphochek® Hemoglobin A2 Control, Bilevel (2 each of 2 levels) .....	4 x1 mL



**Bio-Rad  
Laboratories**

*For further information, please contact the Bio-Rad office nearest you or visit our website at [www.bio-rad.com/diagnostics](http://www.bio-rad.com/diagnostics).*

*Clinical  
Diagnostics Group*

**Website** [www.bio-rad.com/diagnostics](http://www.bio-rad.com/diagnostics) **U.S.** 1-800-2BIO-RAD **Australia** 61-2-9914-2800 **Austria** 43-1-877-8901 **Belgium** 32-9-385-5511 **Brazil** 5521-3237-9400 **Canada** 1-514-334-4372 **China** 86-21-64260808 **Czech Republic** 420-241-430-532 **Denmark** +45-4452-1000 **Finland** 358-9-804-22-00 **France** 33-1-47-95-60-00 **Germany** +49-(0)89-318-840 **Greece** 30-210-7774396 **Hong Kong** 852-2789-3300 **Hungary** 36-1-455-8800 **India** 91-124-4029300 **Israel** 972-3-9636050 **Italy** +39-02-216091 **Japan** 81-3-6361-7070 **Korea** 82-2-3473-4460 **Mexico** +52(55)5488-7670 **The Netherlands** +31-318-540666 **New Zealand** 64-9-415-2280 **Norway** 47-23-38-41-30 **Poland** 48-22-3319999 **Portugal** 351-21-472-7700 **Russia** 7-495-721-14-04 **Singapore** 65-6415-3188 **South Africa** 27-11-442-85-08 **Spain** 34-91-590-5200 **Sweden** 46-8-555-127-00 **Switzerland** 41-61-717-95-55 **Thailand** 662-651-8311 **United Kingdom** +44-(0)20-8328-2000