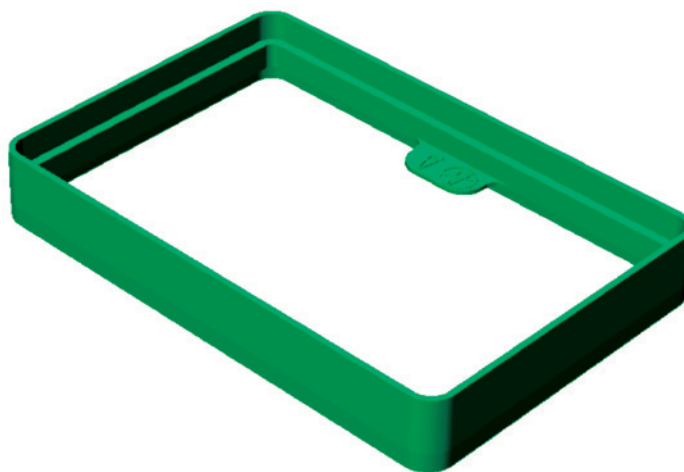


0.2 ml Tube Frame for 96-Deep Well Reaction Module

1849001



The tube frame is designed for use with 0.2 ml PCR tubes in the following instruments:

- PTC Tempo Deepwell Thermal Cycler
- C1000 Touch Thermal Cycler with 96-Deep Well Reaction Module
- S1000 Thermal Cycler with 96-Deep Well Reaction Module

The tube frame is compatible with 0.2 ml PCR tubes with domed or flat caps. When correctly positioned in the 96-Deep Well reaction module, the tube frame prevents the heated lid from crushing the 0.2 ml PCR and strip tubes.

Instructions

1. Choose the proper tube frame orientation.

When using PCR tubes with domed or flat caps, ensure that the correct side is facing up. This is illustrated by the embossed images on each side of the tube frame.

2. Center and set the tube frame.

Place the tube frame around the outside edge of the block.

3. Load samples.

Place the tubes into the block. Avoid positioning the tubes in direct contact with the tube frame. Tubes that are in direct contact with the tube frame may cause condensation, which leads to nonoptimal cycling results. Tubes may be loaded in any position on the reaction module as long as the tubes are not in direct contact with the tube frame.

4. Close the heated lid.

- For the PTC Tempo Deepwell Thermal Cycler, close the heated lid and proceed with the steps shown on the user interface to program and start a run
- For the C1000 Touch or S1000 Thermal Cycler with 96-Deep Well Reaction Module, release the inner heated lid. Use the adjustment knob to lower or raise the inner heated lid. Avoid overtightening the heated lid, which could result in damage to the tube frame or the heated lid. Close the heated lid and proceed with the steps shown on the user interface to program and start a run



Bio-Rad PCR reagents and analytical instruments are manufactured under an ISO 13485:2016 certified Quality Management System and are quality control tested to ensure consistent product performance you can trust.

BIO-RAD is a trademark of Bio-Rad Laboratories, Inc. All trademarks used herein are the property of their respective owner.
© 2024 Bio-Rad Laboratories, Inc.



**Bio-Rad
Laboratories, Inc.**

Life Science
Group

Website bio-rad.com **USA** 1 800 424 6723 **Australia** 61 2 9914 2800 **Austria** 00 800 00 24 67 23 **Belgium** 00 800 00 24 67 23 **Brazil** 4003 0399
Canada 1 905 364 3435 **China** 86 21 6169 8500 **Czech Republic** 00 800 00 24 67 23 **Denmark** 00 800 00 24 67 23 **Finland** 00 800 00 24 67 23
France 00 800 00 24 67 23 **Germany** 00 800 00 24 67 23 **Hong Kong** 852 2789 3300 **Hungary** 00 800 00 24 67 23 **India** 91 124 4029300
Israel 0 3 9636050 **Italy** 00 800 00 24 67 23 **Japan** 81 3 6361 7000 **Korea** 82 080 007 7373 **Luxembourg** 00 800 00 24 67 23
Mexico 52 555 488 7670 **The Netherlands** 00 800 00 24 67 23 **New Zealand** 64 9 415 2280 **Norway** 00 800 00 24 67 23 **Poland** 00 800 00 24 67 23
Portugal 00 800 00 24 67 23 **Russian Federation** 00 800 00 24 67 23 **Singapore** 65 6415 3188 **South Africa** 00 800 00 24 67 23
Spain 00 800 00 24 67 23 **Sweden** 00 800 00 24 67 23 **Switzerland** 00 800 00 24 67 23 **Taiwan** 886 2 2578 7189 **Thailand** 66 2 651 8311
United Arab Emirates 36 1 459 6150 **United Kingdom** 00 800 00 24 67 23

