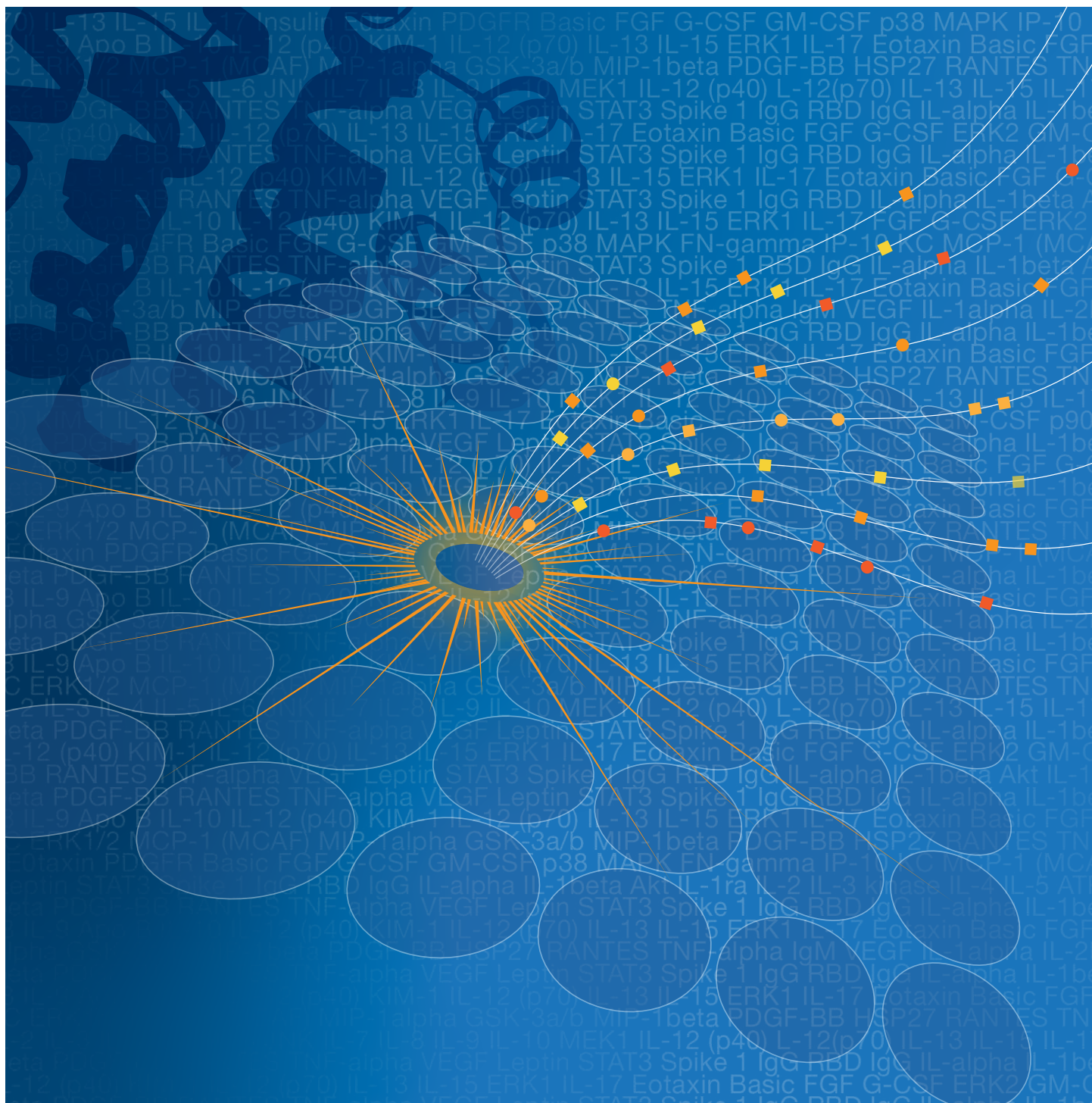


## Bio-Plex Pro Multiplex Immunoassays:

## Tools for Biomarker Discovery and Therapeutic Research and Development



Visit [bio-rad.com/BioPlexBiopharma](http://bio-rad.com/BioPlexBiopharma) for more information.



# Bio-Plex Pro Multiplex Immunoassays

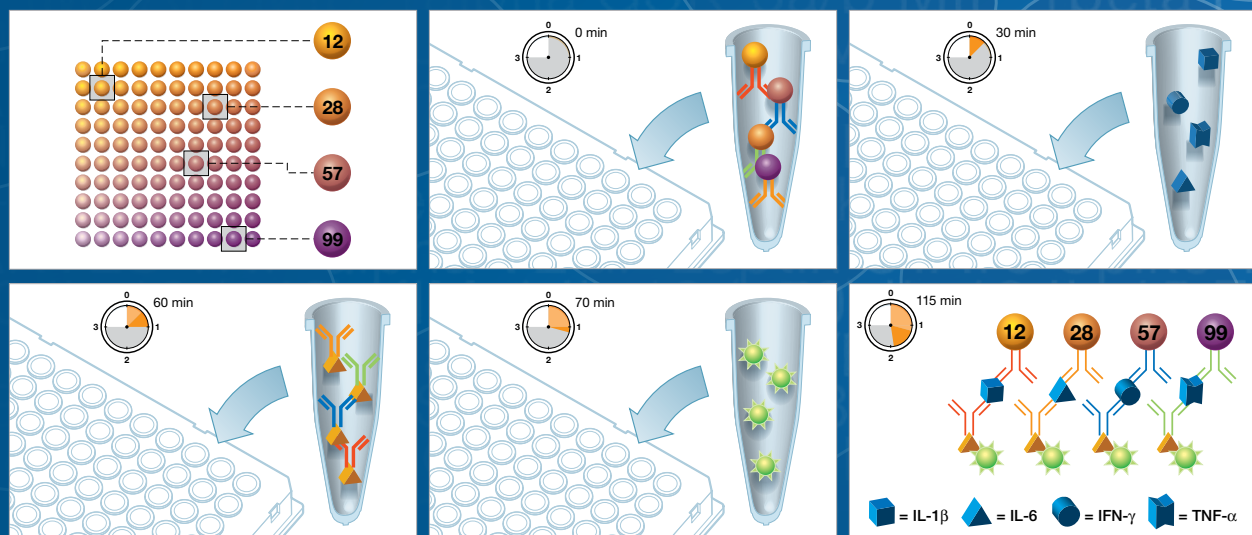
Use Bio-Plex Pro Assays, Instruments, and Software in early drug discovery, from target and biomarker screening all the way through to clinical trials. Whether you want to cast a wide net with a large screening panel or narrow down to only a handful of key assays, Bio-Plex products are offered in flexible configurations verified and validated for specificity, sensitivity, accuracy, and reproducibility, and with a wide dynamic range.

- Save precious time and sample while generating actionable results in <3 hours
- Streamline data analysis with Bio-Plex Manager Software's standard curve auto-optimization and assess relevant differences across multiple analytes and sample types quickly with Bio-Plex Data Pro Software
- Have confidence in your results with high-quality Bio-Plex Pro Assays manufactured in an ISO 13485:2016–certified facility
- Assess instrument performance with Installation Qualification and Operational Qualification performed by a field service engineer and validation and calibration tools provided for routine laboratory use
- Enable compliance with U.S. FDA 21 CFR Part 11 regulations with Bio-Plex Manager Software, Security Edition

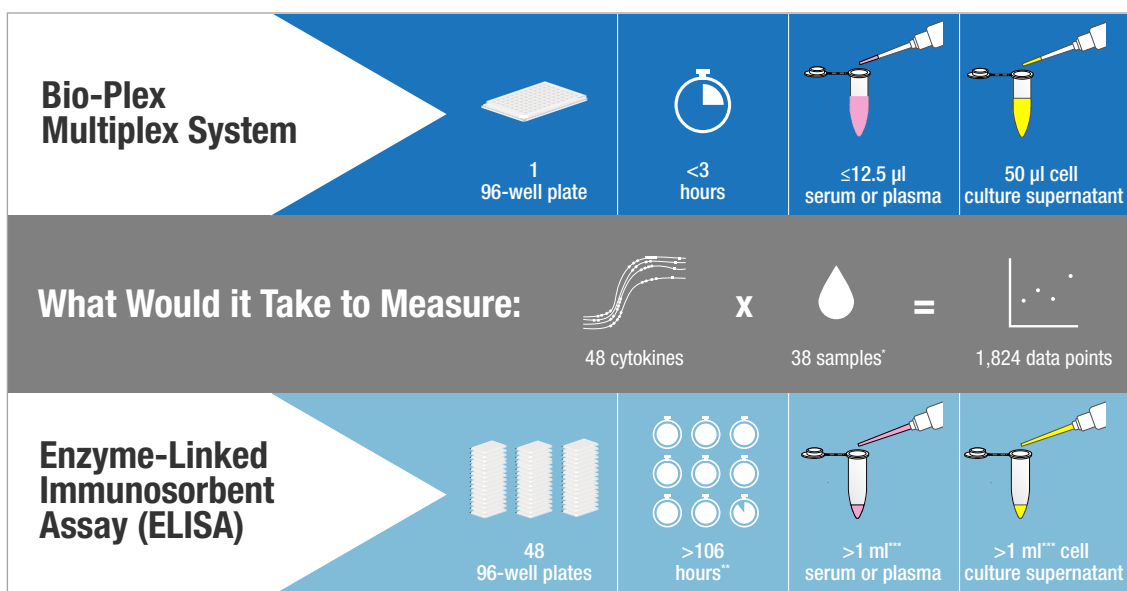
## Increase Efficiency

Discover more in less time with multiplex immunoassays. Bio-Plex Assays utilize beads with unique spectral addresses determined by their dye ratios. These beads are coupled to capture antibodies, then serially incubated with samples, detection antibodies, and a fluorescent reporter, enabling measurement of up to 100 different proteins in one well in less than 3 hours.

[Learn more.](#)



**Workflow overview for Bio-Plex Assays.** Stopwatches show the time required for each step (■) and time elapsed (■), where numbers 0–3 represent hours. A full assay can be completed in less than three hours (■).



\* Samples run in duplicate.  
 \*\* Calculated as 2.2 hours required per plate.  
 \*\*\* Assumes 50 µl of sample used per well.

### Use Less Sample and Time

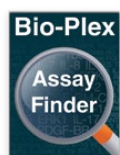
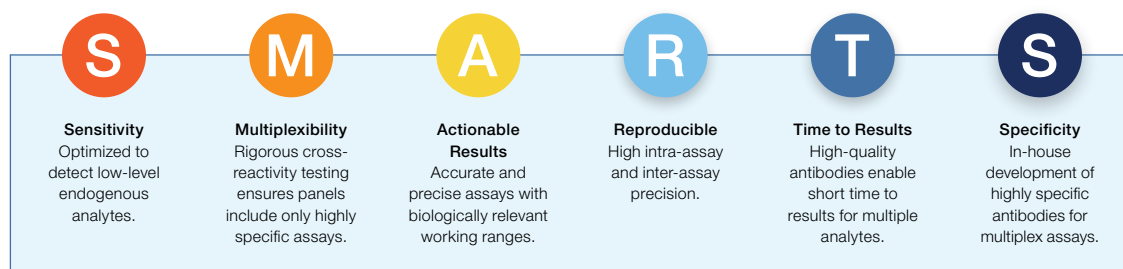
Measure multiple proteins using as little as 10 µl of precious sample. This reduces the number of plates, reagents, and overall time to results, thereby removing confounding variables that affect data quality.

[Learn more.](#)

### Built-In Quality

Bio-Plex Assays are developed using SMARTS design, which builds in quality from material procurement to verification and validation of highly specific, sensitive, and reproducible assays. High sample detectability in relevant matrices enables actionable results.

[Learn more.](#)



### Assay Search Function

Identify your assay of interest in different panels for human, mouse, rat, and multiple species studied in immunology, inflammation, cell signaling, and disease research.

[Learn more.](#)

x-Plex Assay



We Mix

Express Assay



You Mix

### Analyte Guide

Reference assay and panel performance parameters along with sample data.

[Learn more.](#)

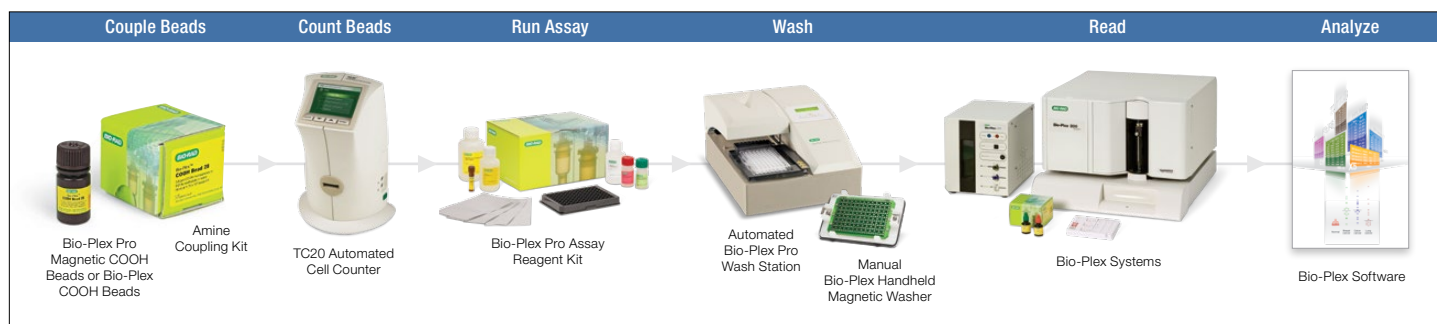
### Flexible Formats

Only want to measure 7 of those 48 targets? Enjoy the flexibility of configuring your own set of targets in a panel. Build a custom assay or choose ready-to-order singleplex assays to mix yourself.

[Learn more.](#)



# Your Custom Assay Development Workflow Source



## Custom Assays

Do you need to develop your own unique assays? We provide all the tools you need to develop and run your assays, including magnetic COOH beads, antibodies, equipment, and an optimized reagent kit. [Learn more.](#)

## Increase Precision

Do you have issues with precision? Magnetic washing and automation improve assay reproducibility. [Learn more.](#)

## Confidence in Your Results

Need confirmation your instrument is performing within specification? Use our ready-to-go Calibration Kit daily and Validation Kit monthly. Bio-Plex Manager Software, Security Edition, enables U.S. FDA 21 CFR Part 11 compliance. [Learn more.](#)

## Actionable Data

How do you make sense of your data? Quickly compare samples and identify relevant differences for targets with Bio-Plex Data Pro Software. [Learn more.](#)



Our professional, knowledgeable, and experienced technical support and service engineers are committed to quality and service. From research to controlled environments, your Bio-Rad specialists will help care for your investment and keep your projects in motion. [Learn more.](#)

## Best-in-Class Service

Bio-Rad has more than two decades of experience with xMAP technology. Our field service engineers perform IQ/OQ during instrument installation. Choose from flexible service options to maintain your instrument.

## Experts in the Lab

Need training? Our field application scientists can assist you.

## Excellent Support

Have an inquiry? Our technical support team is ready to answer your questions about Bio-Plex Pro Assays, Instruments, and Software.

Ready to experience the benefits of Bio-Plex Pro Assays? [Talk with a specialist now.](#)

Visit [bio-rad.com/BioPlexBiopharma](http://bio-rad.com/BioPlexBiopharma) for more information.

BIO-RAD and BIO-PLEX are trademarks of Bio-Rad Laboratories, Inc. in certain jurisdictions. xMAP is a trademark of Luminex Corporation. All trademarks used herein are the property of their respective owner.

The Bio-Plex Suspension Array System includes fluorescently labeled microspheres and instrumentation licensed to Bio-Rad Laboratories, Inc. by the Luminex Corporation.



**Bio-Rad  
Laboratories, Inc.**

Life Science  
Group

**Website** [bio-rad.com](http://bio-rad.com) **USA** 1 800 424 6723 **Australia** 61 2 9914 2800 **Austria** 00 800 00 24 67 23 **Belgium** 00 800 00 24 67 23 **Brazil** 4003 0399 **Canada** 1 905 364 3435 **China** 86 21 6169 8500 **Czech Republic** 00 800 00 24 67 23 **Denmark** 00 800 00 24 67 23 **Finland** 00 800 00 24 67 23 **France** 00 800 00 24 67 23 **Germany** 00 800 00 24 67 23 **Hong Kong** 852 2789 3300 **Hungary** 00 800 00 24 67 23 **India** 91 124 4029300 **Israel** 0 3 9636050 **Italy** 00 800 00 24 67 23 **Japan** 81 3 6361 7000 **Korea** 82 2 3473 4460 **Luxembourg** 00 800 00 24 67 23 **Mexico** 52 555 488 7670 **The Netherlands** 00 800 00 24 67 23 **New Zealand** 64 9 415 2280 **Norway** 00 800 00 24 67 23 **Poland** 00 800 00 24 67 23 **Portugal** 00 800 00 24 67 23 **Russian Federation** 00 800 00 24 67 23 **Singapore** 65 6415 3188 **South Africa** 00 800 00 24 67 23 **Spain** 00 800 00 24 67 23 **Sweden** 00 800 00 24 67 23 **Switzerland** 00 800 00 24 67 23 **Taiwan** 886 2 2578 7189 **Thailand** 66 2 651 8311 **United Arab Emirates** 36 1 459 6150 **United Kingdom** 00 800 00 24 67 23

